

# FREESTANDING DWELLING - HAMPTON DESIGN



## FEATURES

- 2 Storey
- 4 oversized Bedrooms
- Sprawling master suite with balcony, walk-in robe and ensuite
- Built-in study
- 3 Bathrooms
- LED Lighting
- High ceilings throughout
- Ducted air-conditioning throughout
- Ceiling fans throughout
- Sprawling open floor plan
- Ample lifestyle spaces
- Butler's pantry
- Cutting edge sophistication
- Builder's and structural warranty

Fusing timeless sophistication with cutting edge contemporary ambiance, this family home design offers a first class sense of luxury and space. Set over two levels, delivering a flowing modern floorplan, the custom architectural design brings together classic Queensland elegance, Hampton-inspired luxe and a striking contemporary aesthetic.

Upon entry to this stunning home via the grand doorway, you are welcomed by high ceilings and a sweeping classic Hampton staircase. Basking in the glow of ambient downlighting and finished with neutral colours and hardwood timber flooring, the open plan living and dining area will take your breath away with a view directly out to your very own sprawling private oasis.

The commanding Hampton's kitchen takes centre stage in this light-filled space and is appointed with an expansive breakfast bar and island bench, stone benchtops, soft-close cabinetry, gas cook top and dishwasher. The Butler's pantry is a true Butler's pantry! It delivers on serious storage space making it easy to create that 'minimalistic' look in your kitchen.

Contact Investis Property Group for more details.

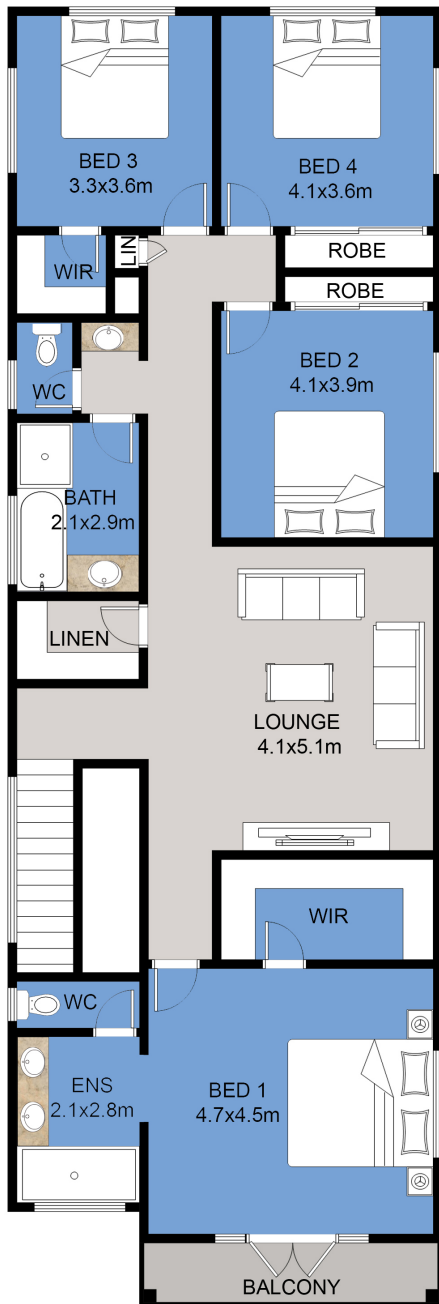
## AREA AND DIMENSIONS

Lower Living: 107.8 m<sup>2</sup>  
Upper Living: 144.2 m<sup>2</sup>  
Porch: 3.2 m<sup>2</sup>  
Balcony: 4.9 m<sup>2</sup>  
Garage: 37.7 m<sup>2</sup>  
Total: 322.7 m<sup>2</sup>

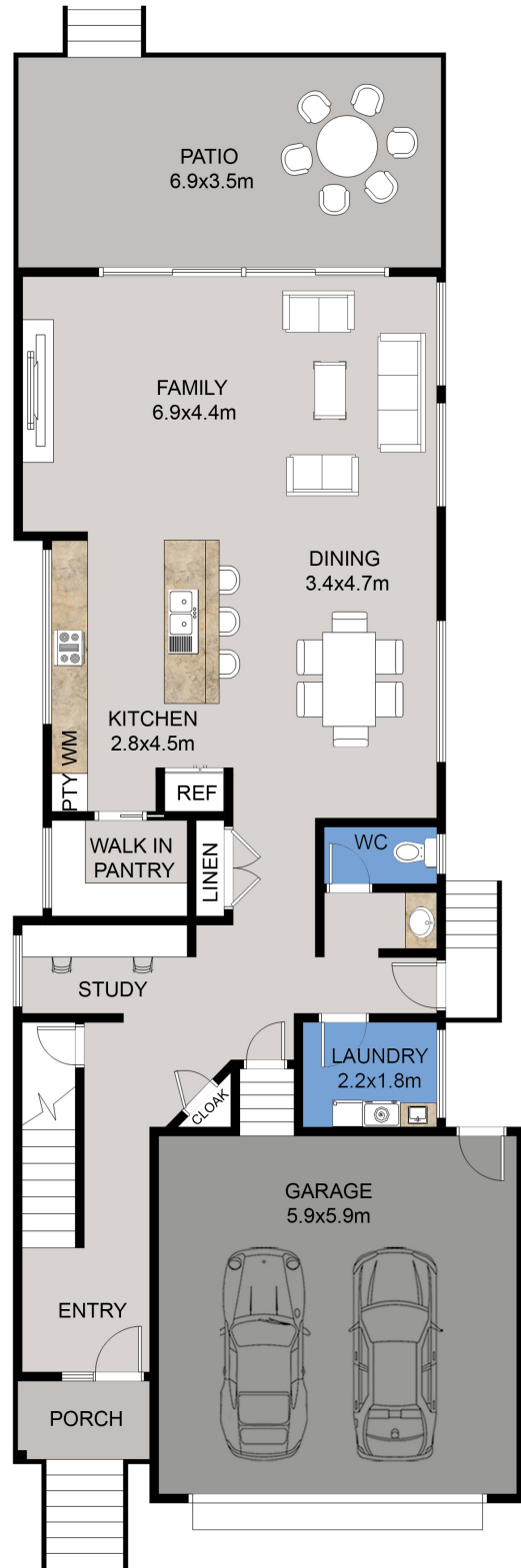
# FREESTANDING DWELLING HAMPTON DESIGN

FITS MINIMUM\*

10m lot width  
40m lot depth  
405m<sup>2</sup> lot size



UPPER FLOOR



LOWER FLOOR

\* Subject to orientation and fall of land, and developer and council guidelines. Traditional floorplan shown.