

FREESTANDING DWELLING - ALTANDI DESIGN



FEATURES

- 2 Storey
- 4 Bedrooms
- 2 Bathrooms
- 2 Garages
- LED downlights
- High ceilings throughout
- Ducted air-conditioning throughout
- Ceiling fans throughout
- Sprawling open floor plan
- Ample lifestyle spaces
- Butler's pantry
- Cutting edge sophistication
- Builder's and structural warranty

Spanning two storeys, the interiors of this luxury contemporary home design are beautifully designed with rich timber floors and plenty of natural light. There is a spacious central open plan living, dining and kitchen area, spreading through the glass sliding door to the under-covered patio.

There is a large and well-appointed kitchen featuring stone benchtops, a window for more natural light, quality stainless steel appliances including freestanding gas cooktop, ducted range hood, dishwasher, and a large walk-in butler's pantry, ducted air conditioning throughout and automatic double car garage.

Via the timber staircase with glass balustrade to the upstairs, there is a separate media room / additional lounge that can be converted to an extra bedroom, which provides excellent versatility. There are four spacious bedrooms on this level all equipped with ceiling fans, three have built-in wardrobes, serviced by a modern main bathroom with shower and bathtub. The spacious master suite is ideally positioned at the front with a glass balustrade balcony, luxurious ensuite with double vanities and a large walk-in robe.

AREA AND DIMENSIONS

Ground Floor: 127.6 m²
First Floor: 116.9 m²
Outdoor Living: 35.0 m²
Total: 279.5 m²

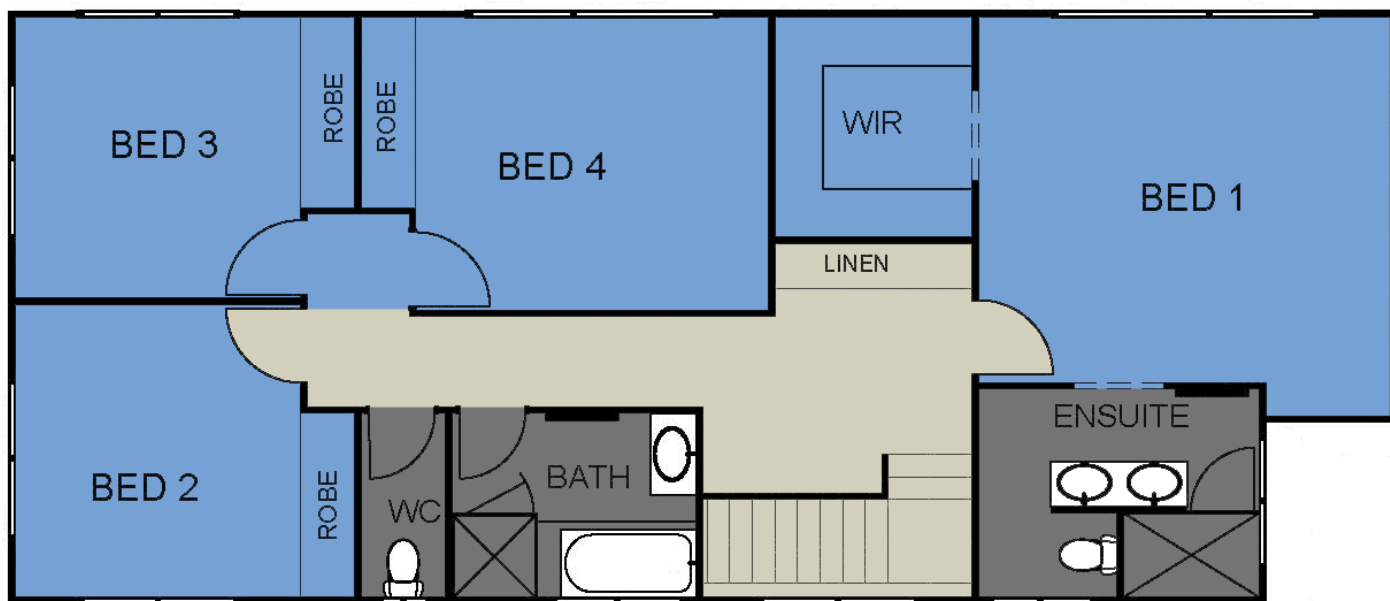
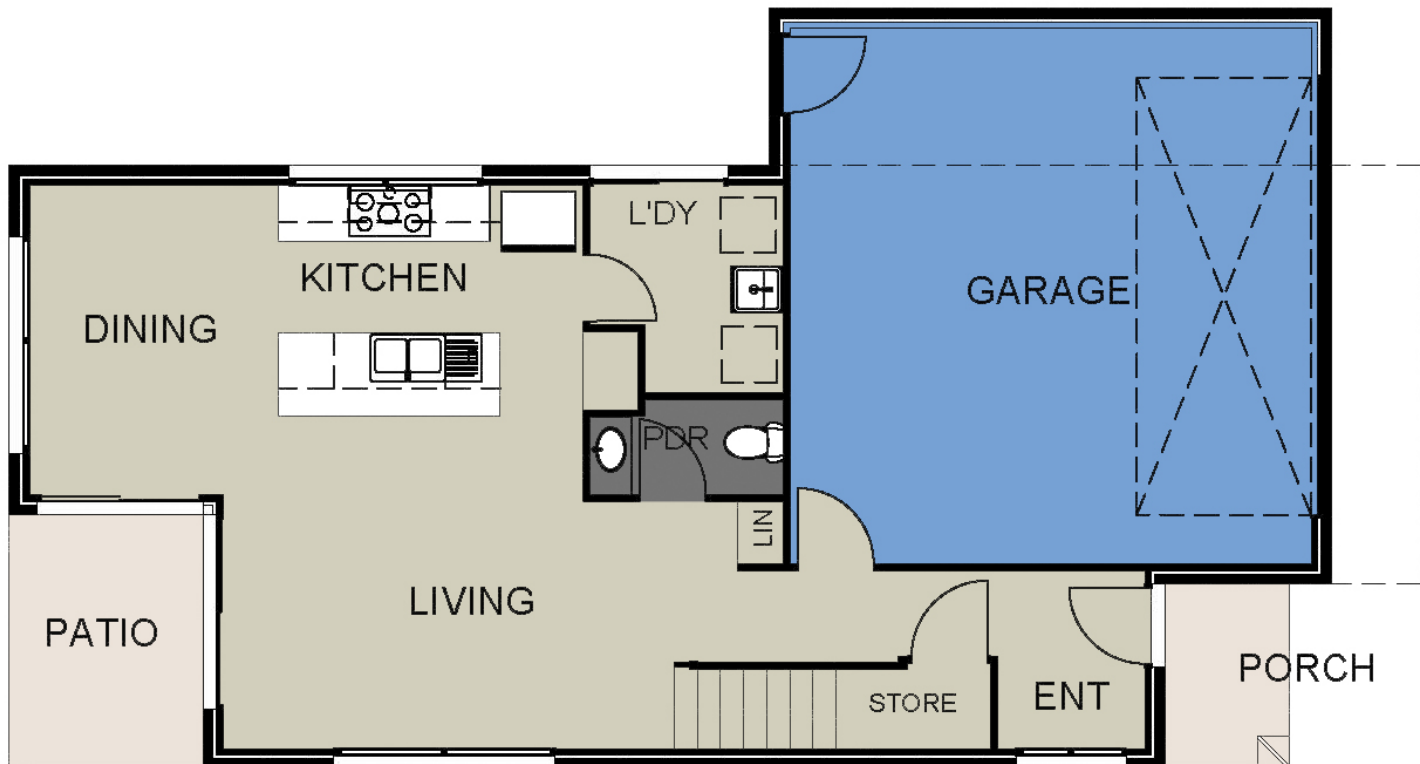
Contact Investis Property Group for more details.

FREESTANDING DWELLING

ALTANDI DESIGN

FITS MINIMUM*

10m lot width
40m lot depth
405m2 lot size



* Subject to orientation and fall of land, and developer and council guidelines. Traditional floorplan shown.